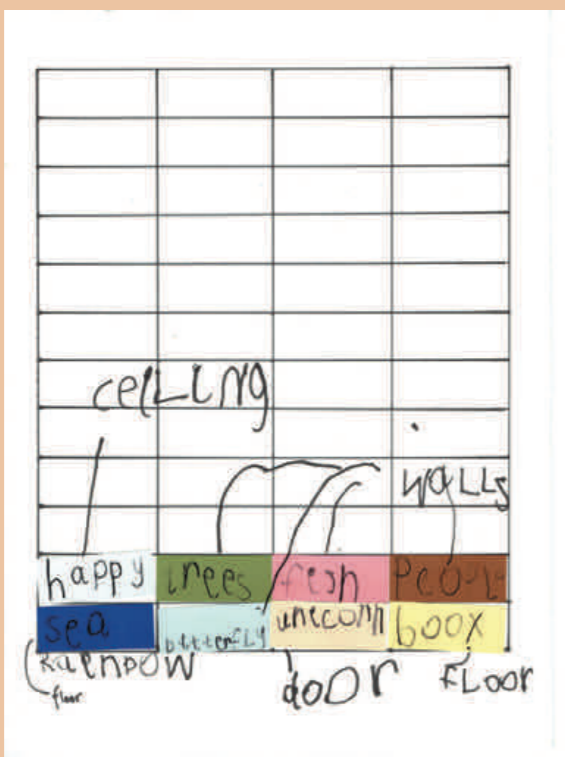
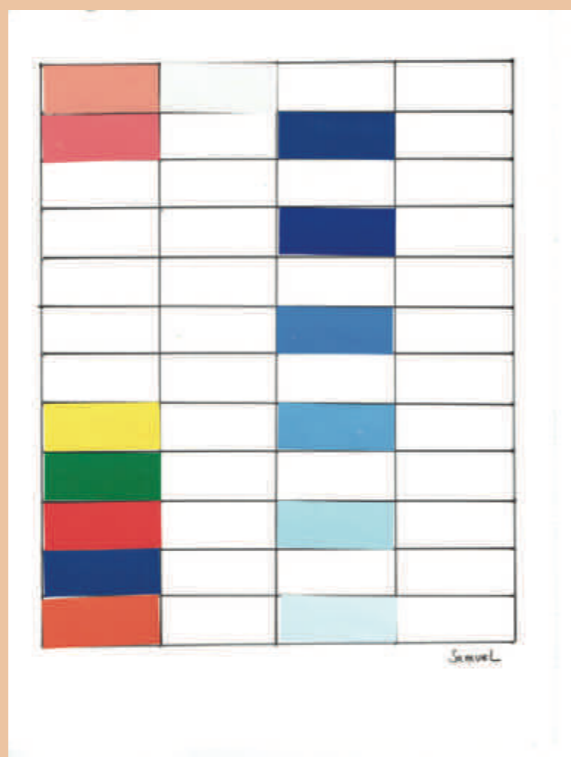


Toby



Rainbow



Samuel



Sidra



Ezekiel



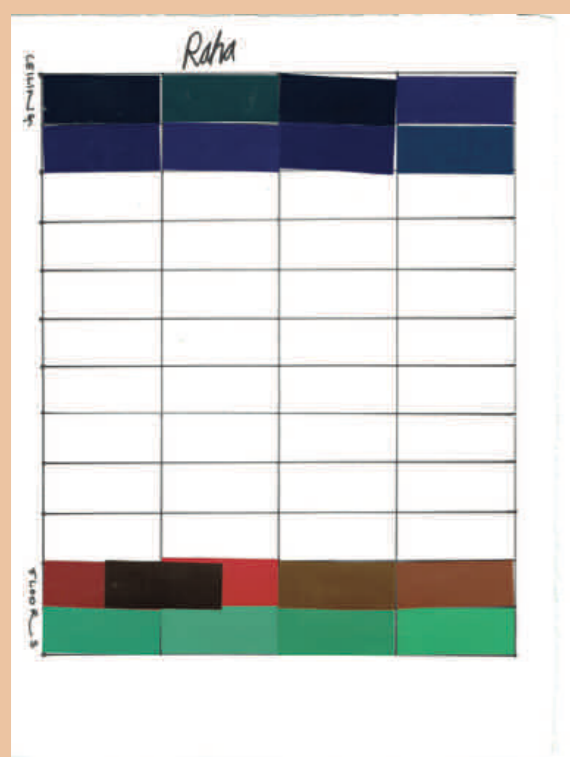
Sasha



Rachel



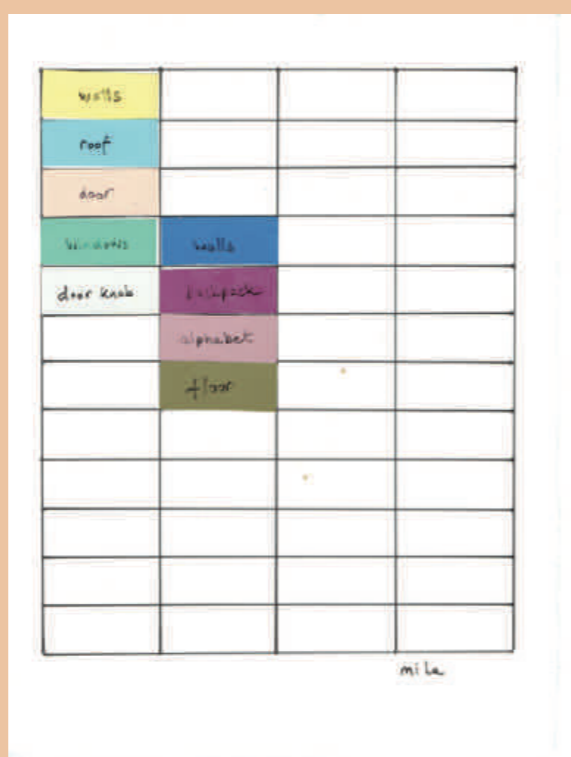
Ayesha



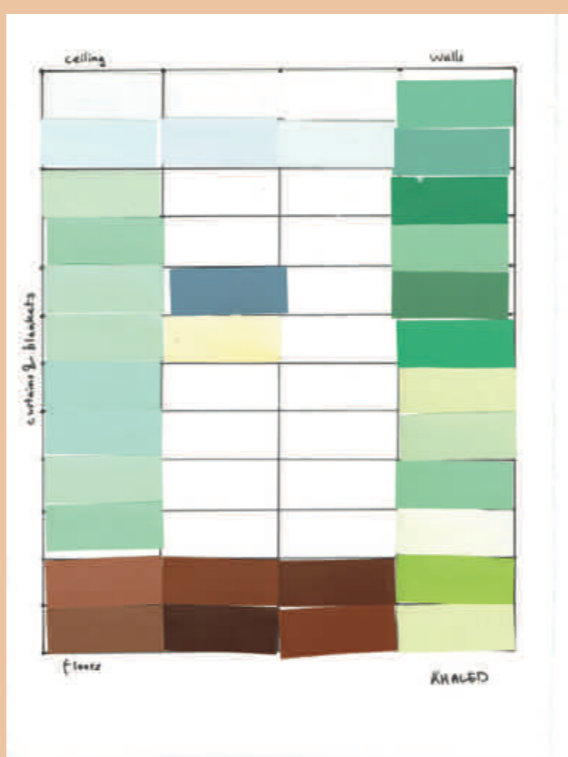
Raha



Nasmah



Mila



Khaled



Beverly



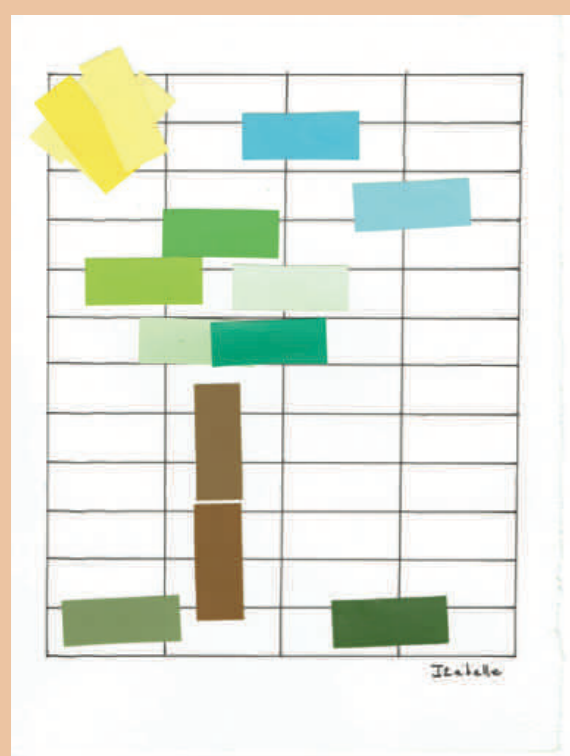
Ariyan



Anon



Lisa



Izabelle



Louis



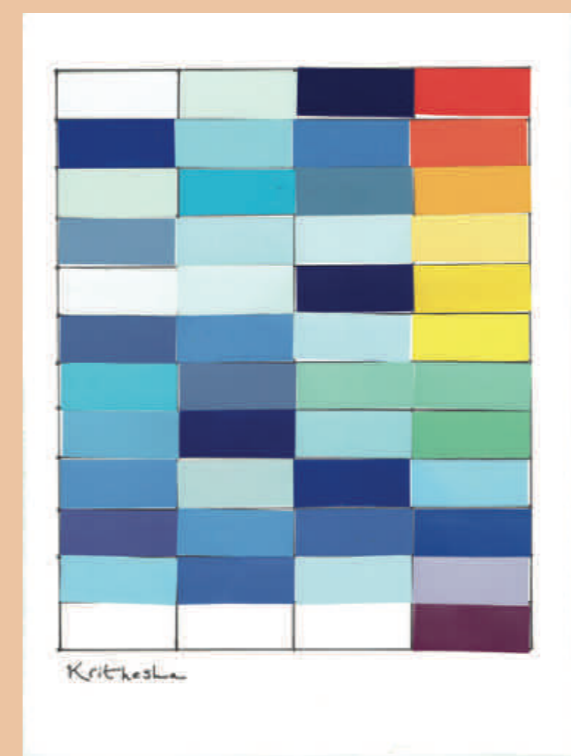
Arya



Hamdi



Mariam



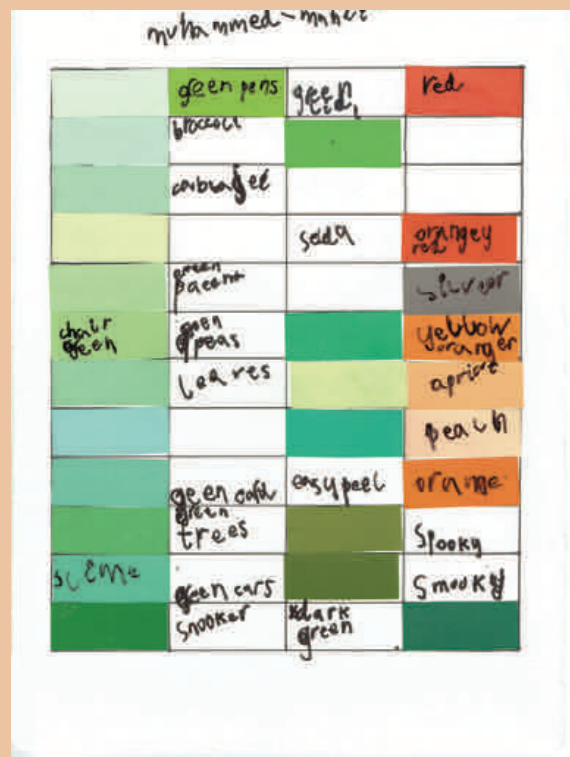
Krithesha



Caitlin



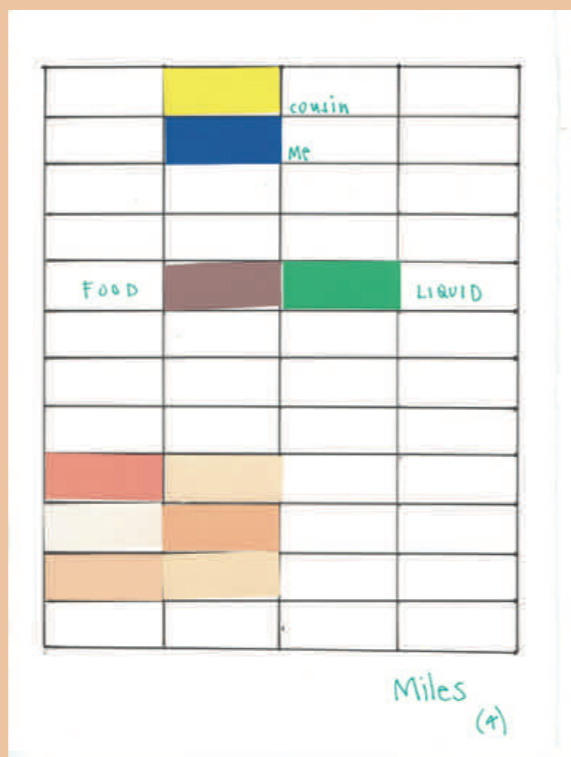
Helena



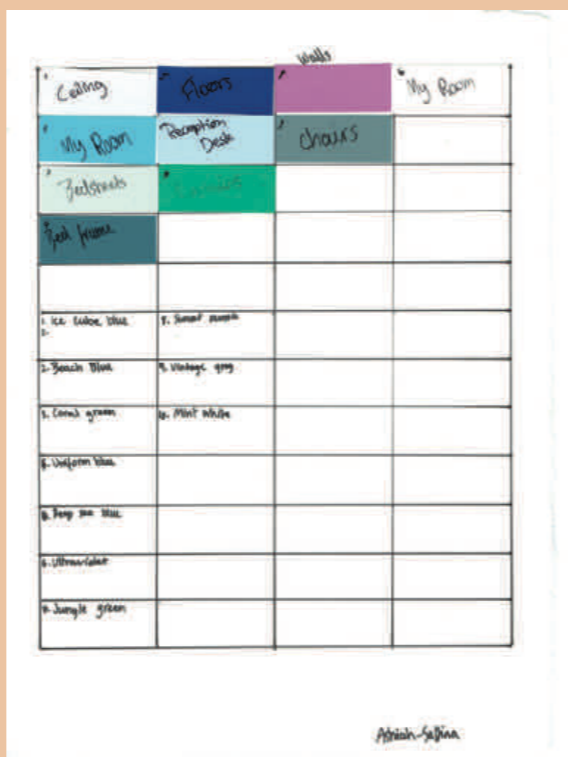
Muhammed



Kira



Miles



Ashiah-Salfina



Shauna



Tamara

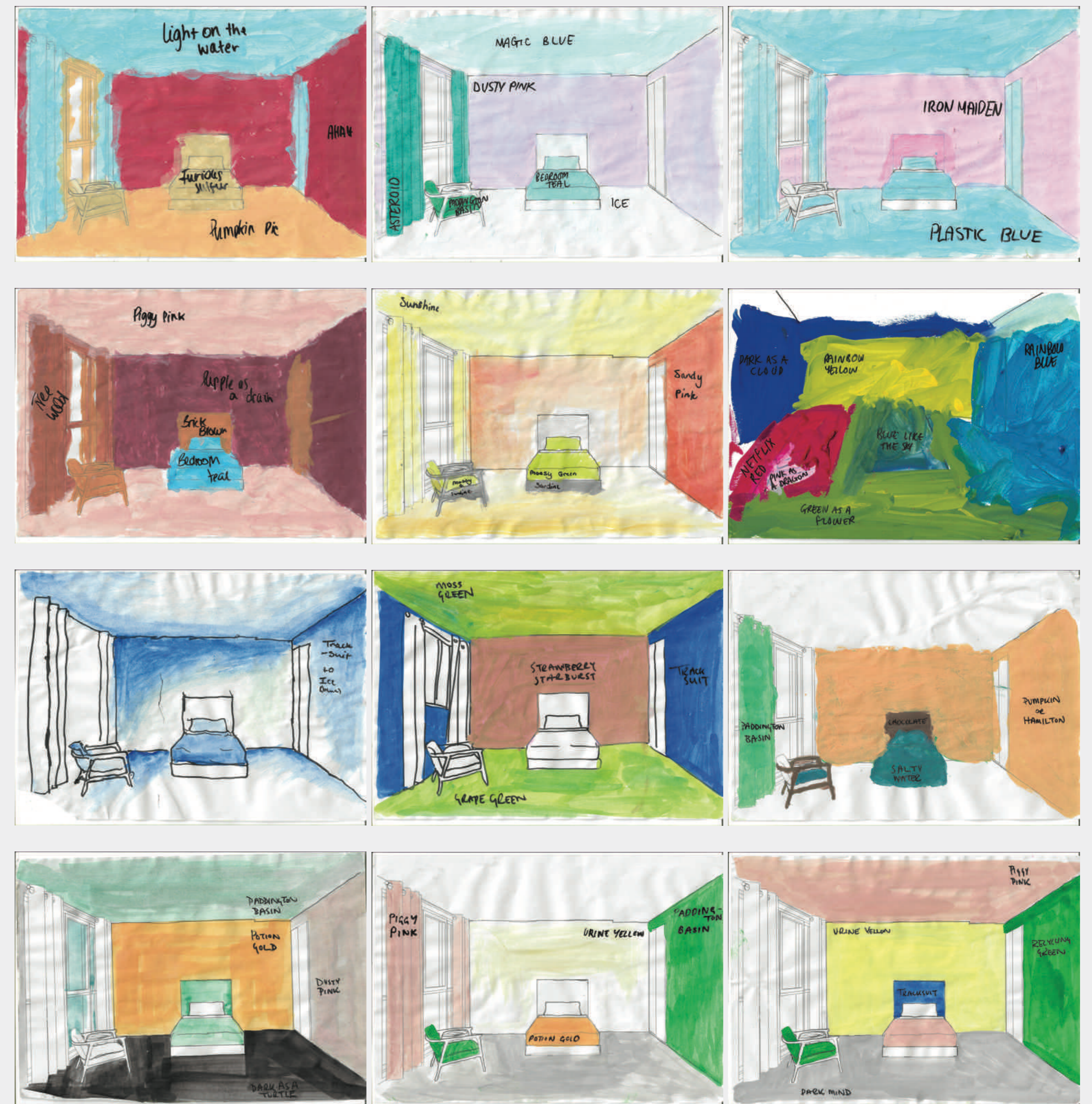


Sara



Kamari

Underground Puddle S 4010-R70B	Sardine S 3020-R70B	Dark Mind S 4010-R70B	Dark As A Turtle S 5010-R50B	Batman Grey S 5005-B20G	Camouflage S 3010-G30Y
Furious Sulphur S 2020-G90Y	Ashy Brown S 3010-Y20R	Porcelain S 1010-Y50R	Putin S 1010-Y60R	Dylan Peach S 0510-Y60R	Piggy Pink S 1020-Y60R
Natural Blond S 2010-Y30R	Kim S 2010-Y40R	Dirty Pink S 2010-Y90R	Dusty Pink S 2010-R10B	Stained Pink S 2020-R	Strawberry Starburst S 2030-Y90R
Iron Maiden S 0520-R	Maternity Pink S 0520-Y90R	Personal Pink S 1050-R20B	Rosy Pink S 2070-R10B	Majestic Magenta S 2065-R20B	Percussion S 2060-R20B
Anatomy Pink S 1070-R10B	Sonic Mist S 1060-R30B	Purple Plums S 2050-R30B	Royal Purple S 3050-R40B	Purple As A Drain S 5030-R20B	Fly Poop S 5020-R20B
Gloomy Purple S 2040-R60B	Scientific Blue S 1555-R70B	Twilight S 1040-R70B	Moondust S 1030-R70B	Washed-Out Purple S 1010-R60B	Ice S 0300-N
Maternity Blue S 0510-B50G	Magic Blue S 0510-R90B	London Sky S 1010-B10G	Plastic Blue S 1020-B	Light On The Water S 0530-B	Swimming Pool Blue S 0530-R90B
Dylan Blue S 2030-B	Marianas Trench S 5030-R90B	Tracksuit S 4055-R70B	Midnight Blue S 2060-R80B	Aqua Azul S 2050-R80B	Blue Lake S 2060-R90B
Blue Whale S 1050-R90B	Salty Water S 3040-B10G	Underwater Blue S 2060-B	Bedroom Teal S 1050-B10G	Paddington Basin S 2040-G	Asteroid S 2050-B50G
Forest Green S 4550-G	Recycling Green S 4050-G10Y	Healing Green S 4050-G50Y	Roots S 3060-G90Y	Mossy Green S 1070-G50Y	Grape Green S 1050-G50Y
Lime S 0570-G70Y	Urine Yellow S 0550-G90Y	Sunshine S 0575-G90Y	Banana S 0560-Y	Charlotte Yellow S 1070-G90Y	Yesterday Yellow S 1070-Y
Potion Gold S 1070-Y10R	Hamilton S 1030-Y20R	Pumpkin Pie S 1040-Y20R	Obvious Orange S 0580-Y30R	Goldfish Orange S 0580-Y50R	Trump Orange S 0550-Y40R
Sandy Pink S 0550-Y70R	Peach Blossom S 0550-Y80R	Peach Cream S 1040-Y80R	Coral World S 1050-Y80R	Anna S 1070-Y90R	Red Lipstick S 2070-Y90R
Netflix Red S 2070-Y80R	Beef Jerkymon S 2070-Y50R	Brick Brown S 3060-Y20R	Tree Wood S 4550-Y60R	Chocolate S 6030-Y60R	Gulliver Brown S 4050-Y80R
Broken Brown S 5040-Y80R	Bad Blood S 5040-Y90R	Vampire S 6030-R	Mood S 5040-R	Autumn Lipstick S 4050-R10B	Cochineal S 3060-R



Over six months in 2018, artist Navine G. Khan-Dossos held workshops with patients in the Grand Union and Great Western wards, the Allergy and Outpatients departments at the St Mary's Hospital, as well as at The Showroom. Together, they made a series of collages looking at the relationship between colours, and thought about what colours they would like to see in the hospital's walls, the ceilings, the doors, and the furniture.

POLYCHROMY PLAYS is a functional colour palette generated from these discussions, collages, and paintings, which can be potentially used in the future. It was made by giving the patients agency in their environment, and allowing them to imagine ways to improve the spaces in which they found themselves for short, long, or intermittent stays. They, better than anyone else, know what it is like to

spend time in these spaces and should be part of the dialogue about how to improve the way they feel during their treatment. Colour has an important role to play in this discussion.

The POLYCHROMY PLAYS palette comprises both the colours and names given to each shade. These include a wide range of inspirations, from inside and outside the hospital, feelings, foods, politics, and bodily functions. They are sometimes light and playful and sometimes transgressive and troubling, showing that it is important to involve the light and the dark sides of hospital experience as a more holistic way to consider the reality of the environment. The colours use the NCS reference system so that future designers, architects, and artists working in the hospital can work with the exact shades picked by the patients.

POLYCHROMY PLAYS is a collaborative project between The Showroom, Imperial Health Charity, and artist Navine G. Khan-Dossos, with the patients of the Paediatric department at St Mary's Hospital, Imperial College Healthcare NHS Trust, Paddington. It is part of Imperial Health Charity's Artist in Residence programme and The Showroom's Communal Knowledge programme, which invites artists and other cultural producers to work with community groups, organisations and individuals from the neighbourhood towards collective, creative outcomes. Communal Knowledge is generously supported by John Lyon's Charity.

Thanks to Louise Shelley, Emily Pethick and Jenny Cooper at The Showroom, Kate Pleydell and Lucy Zacaria at Imperial Health Charity, Caroline Scott-Lang, Mando Watson, Lucy Underhill, The Play Team at St Mary's, and Ab Rogers.